

HydroSure

IRRIGATION SYSTEMS THAT WORK

4-Zone Water Tap Timer

www.hydrosure.com

COMPONENTS INCLUDED



x1

1. BATTERY COMPARTMENT COVER

2. BATTERY COMPARTMENT

- Slide out the battery compartment (2), and insert 4x (LR6/AA) 1.5V alkaline batteries.
- Use only fresh alkaline batteries at the beginning of the season. DO NOT use rechargeable batteries.

3. 3/4" ADAPTER

4. FILTER

Filter traps dirt particles and prolong life of timer. Clean filter regularly.

5. COLLAR RING

Loosen the collar ring (5) until the tap adaptor (3) is unlocked, screw the tap adaptor (3) tightly on to a tap and then tighten the collar ring (5). DO NOT use spanners or pliers to avoid damage to the timer.

6. BIG LCD SCREEN

7. SETTING DIAL

8. OK/MANUAL BUTTON

Confirm settings or water manually.

9. +/DELAY BUTTON

Adjust settings or set delay watering.

10. - BUTTON

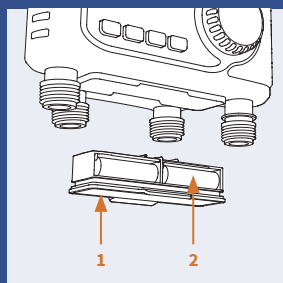
Adjust settings.

11. ZONE BUTTON

Switch watering zone when setup.

12. MALE SNAP-ON CONNECTOR

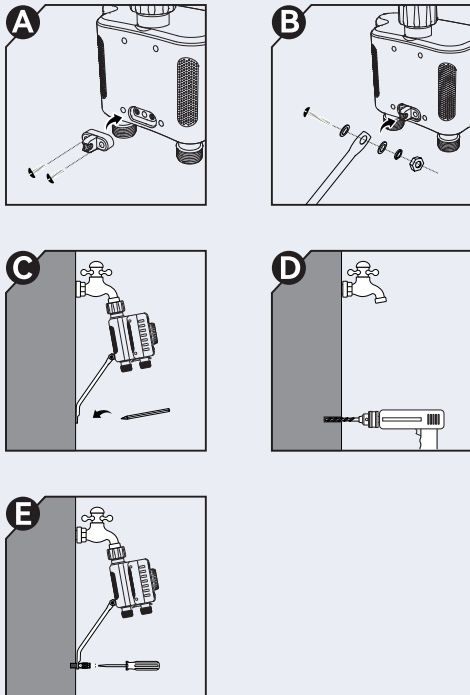
Power:
4 AA alkaline batteries
required (not included)



PROGRAMMING THE TIMER



1. INSTALLATION



- A** Screw the supporting part on the back of the water timer.
- B** Use the screw to install the bracket accessory onto the supporting part through the hole.
- C** Install the timer on the tap and mark a proper position before installing the brace.
- D** Drill a hole for screwing.
- E** Attach the brace with the screw.

2. HOW TO SET CURRENT TIME



- Turn the dial to **SET CLOCK**.
- Use **+ and -** buttons to set the hours, then press **OK** to confirm and set minutes. Hold buttons for 3 seconds to quickly adjust.
- Press **OK** to make a final confirm after set up minutes and then everything stops blinking. At this time, **ONLY** press **+ and -** button to set up time again.
- At any time during clock setup, press and hold the **OK** button to switch 12H/24H time format.
- After finishing setup, turn the dial to **START TIME**.

3. HOW TO SET WATERING START TIME



- Turn the dial to **START TIME**.
- Use **+ and -** buttons to set the hour of the watering start time, then press **OK** to confirm and set minutes. Hold buttons for 3 seconds to quickly adjust.
- Press **OK** to make a final confirmation after set up minutes and then everything stops blinking. At this time, **ONLY** press **+ and -** button to set up time again.
- During setting, press **ZONE** button to switch the zone of setting.
- After finishing setup, turn the dial to **HOW LONG**.

4. HOW TO SET WATERING DURATION

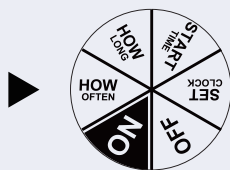
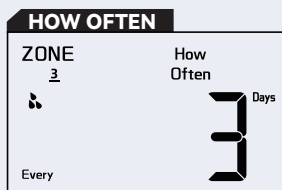


- Turn the dial to **HOW LONG**.
- Use **+ and -** buttons to set the hour of the watering duration, then press **OK** to confirm and set minutes. Hold buttons for 3 seconds to quickly adjust.
- Press **OK** to make a final confirmation after set up minutes and then everything stops blinking. At this time, **ONLY** press **+ and -** button to set up time again.
- The maximum watering duration can be set is 3 hours and 59 minutes. When set the time to 0 hour and 0 minute, it means the plan will not run.
- During setting, press **ZONE** button to switch the zone of setting.
- After finishing setup, turn the dial to **HOW OFTEN**.

PROGRAMMING THE TIMER

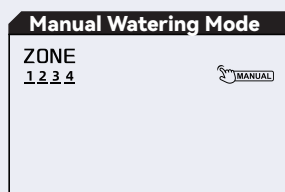


5. HOW TO SET WATERING FREQUENCY



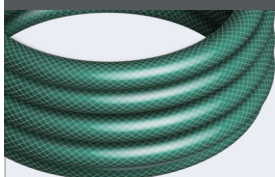
- Turn the dial to **HOW OFTEN**.
- Use **+** and **-** buttons to set watering frequency, then press **OK** to confirm and set minutes.
- Press **OK** to make a final confirmation and then everything stops blinking. At this time, **ONLY** press **+** and **-** button to resume set up.
- The options of the frequency is every 8 hours, 12 hours, and 1 to 7 days.
- During setting, press **ZONE** button to switch the zone of setting.
- After finishing setup, turn the dial to **ON** to run the watering schedules.

6. MANUAL WATERING FUNCTION



- When the dial stays in **ON**, press and hold **OK** button for 3 seconds to enter manual watering model.
- First, set the zone preferred to manually water. Zone 1 will start blinking. Short press **ZONE** button to switch zone options and use **OK** button to select.
- After selecting zones, hold the **ZONE** button to confirm and go to manual water duration setup.
- The minute will blink. Use **+** and **-** buttons to set time. Hold buttons for 3 seconds to quickly adjust.
- Press **OK** button to start manual watering at once, or leave it without any operation for 5 sec to automatically start.
- When manual watering, hold **OK** button again to stop, or turn dial to **OFF** to stop.

ADDITIONAL EQUIPMENT



7. RAIN DELAY FUNCTION



When the dial stays in **ON**, press and hold the **+** button for 3 seconds to enter the delay mode setting. Press **+** and **-** button to set the delay time for 0, 24, 48, or 72 hours, and press **OK** button to confirm. Select 0H will cancel the delay mode. If there is no action within 5 seconds, then it will cancel the delay mode as well.

During the delay mode opening, hold the **+** button to cancel the delay.

Note:

- When one watering plan has more than one valve to run, then the timer will open the valve one by one in the order of zone number, which means the timer can only open **ONE** valve at a time.
- The four channels cannot be opened at the same time, only one channel can be opened at a time. When the start time of the four channels is the same, priority will be given to opening one channel, and when the execution of one channel is completed the execution of the second channel, then the third channel, and then the fourth channel will begin.

8. OTHER FUNCTION



- If you wish to stop all watering plan for an extended period, turn the dial to **"OFF"**. (Your settings are saved)
- The timer will not water automatically while in OFF mode. (The screen will display the word OFF in large letters)
- To start watering automatically again, turn the dial back to **"ON"** to resume your programmed watering schedule.

BATTERY STATUS

Battery Status will be displayed as following:

-  Low Power

Note: When the low battery indicator appears on display, the valve will close automatically to avoid leakage. Please replace the battery in time in case of interrupting the normal operation.

PROGRAMMING THE TIMER



PROTECTING THE TIMER

- 1) **Intended for outdoor use only**, put in the sheltered outdoor will prolong the product lifetime.
- 2) Using tools to tighten your timer is too tight, easy to damage, to avoid damaging the timer, please tighten it with your hand instead of a tool.
- 3) Please ensure that the filter is placed horizontally in the top connector before installation to prevent leakage, add a filter and thread seal tape if necessary.
- 4) Mesh filter prevents dirt particles, prolonging the life of the hose timer. Clean filter regularly and replace if worn.
- 5) When the power is low, please replace the batteries in time to avoid the interruption of the normal operation; when replacing the batteries, please make sure that the battery compartment is dry.
- 6) When not in use, remove batteries, drain and store indoors away from freezing.
- 7) Do not use the timer when it's more than 122°F (50°C) or less than 37.4°F (3°C).
- 8) Do not subject the product to extreme force and shock.
- 9) Severe electrical shock could result if water is sprayed into outlets or sources of electrical current. Never immerse the product in water.

WARRANTY

HydroSure provides a 1-year worry-free warranty against manufacturing defects in materials and workmanship from the date of purchase. During the warranty period, we will replace free of charge the product found to be defective under reasonable use and service as determined solely by HydroSure. To place a warranty request, please send the email to sales@waterirrigation.co.uk

CUSTOMER SERVICE

If timer does not work, please check instruction or contact customer support at sales@waterirrigation.co.uk or visit our Help & Advice Centre at www.waterirrigation.co.uk/how-to-irrigate-a-watering-guide

