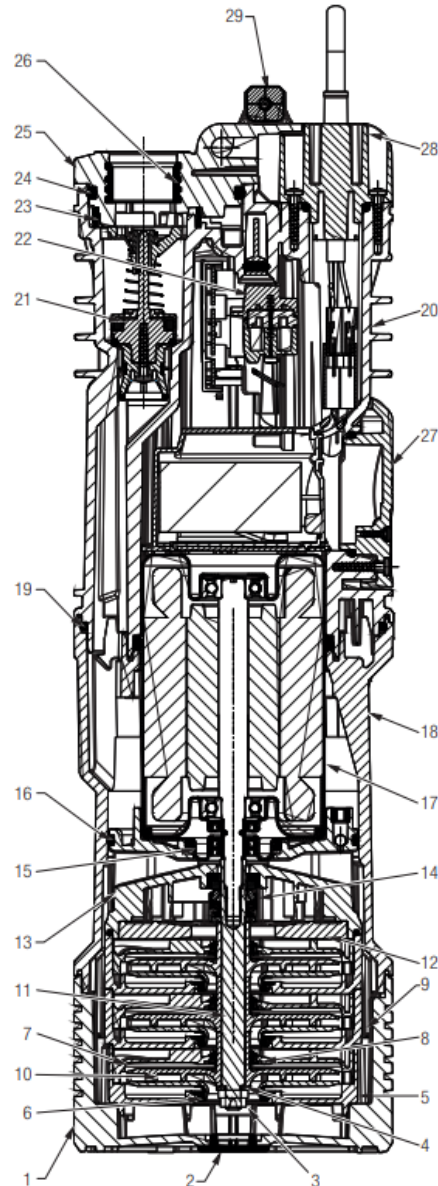


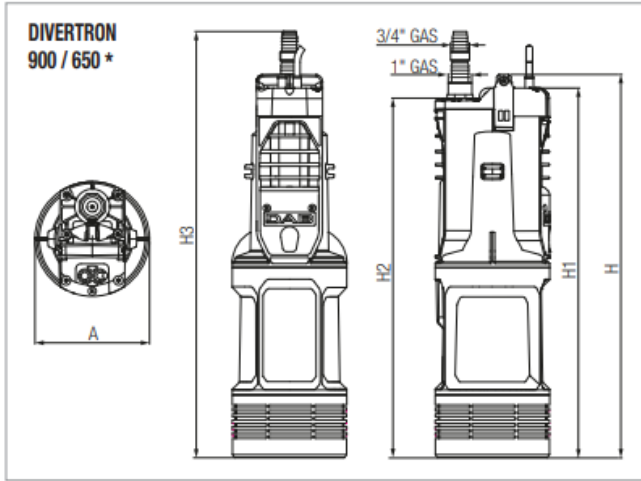
Divertron X900 Product Specifications

Materials

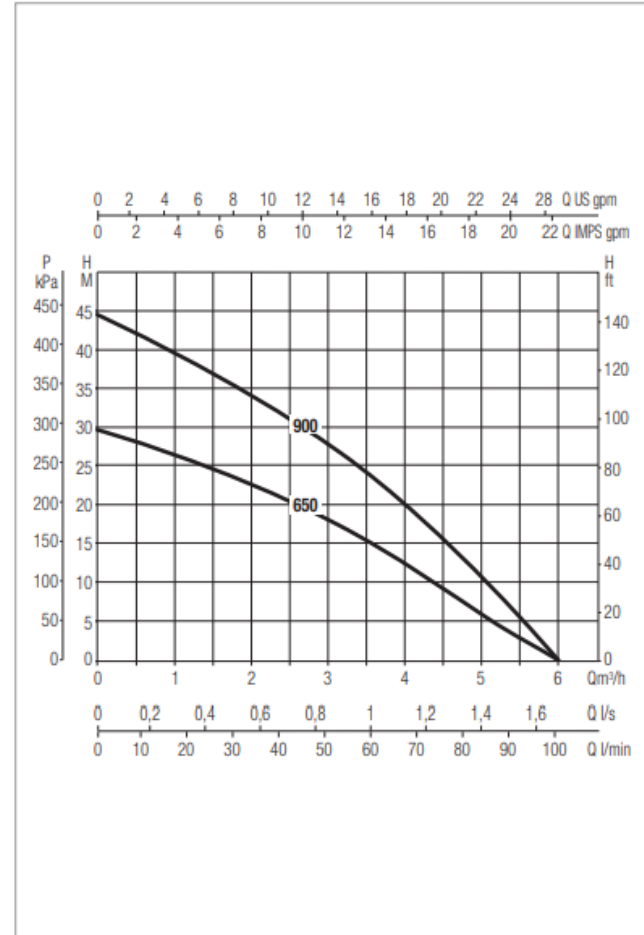
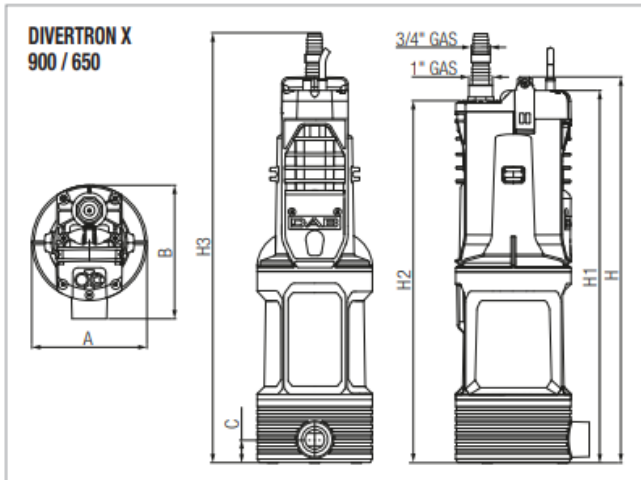
N°	PARTS	MATERIALS	
1	BASE	TECHNOPOLYMER	
2	INSPECTION CAP	EPDM	
3	NUT	SS A2	
4	WASHER	SS A2	
5	FIRST STAGE CASE	TECHNOPOLYMER	
6	FRONT FLOATING RING	TECHNOPOLYMER	
7	DIFFUSER	TECHNOPOLYMER	
8	BACK FLOATING RING	TECHNOPOLYMER	
9	STAGE CASE	TECHNOPOLYMER	
10	IMPELLER	TECHNOPOLYMER/SS AISI 304	
11	SHAFT	SS AISI 303	
12	FINAL DIFFUSER CAP	TECHNOPOLYMER	
13	MOTOR FLANGE	TECHNOPOLYMER	
14	MECHANICAL SEAL	CARBON-IMPREGNATED RESIN/CERAMIC/NBR	
15	OR GASKET	EPDM	
16	OR GASKET	EPDM	
17	MOTOR	CAP	SS AISI 304
		MOTOR SHAFT	SS AISI 416
18	BODY	TECHNOPOLYMER	
19	OR GASKET	EPDM	
20	COVER	TECHNOPOLYMER	
21	NON-RETURN VALVE	TECHNOPOLYMER/NBR/AISI 302/AISI A2/FERRITE	
22	PRESSURE SWITCH	TECHNOPOLYMER/SILICONE	
23	SAND FILTER	TECHNOPOLYMER	
24	OR GASKET	EPDM	
25	OUTLET COVER	TECHNOPOLYMER	
26	INSERT	BRASS	
27	CAPACITOR COMPARTMENT COVER	TECHNOPOLYMER	
28	CABLE FLANGE	TECHNOPOLYMER	
29	HANDLE	TECHNOPOLYMER	



Electrical Data and Dimensions



* Same dimensions for models 900 A - 650 A (with float switch)



The performance curves are based on kinematic viscosity values = 1 mm²/s and density equivalent to 1000 kg/m³. Curve tolerance according to ISO 9906.

Model	A	B	C	H	H1	H2	H3	Pack Dimensions			Packing Volume (DM3)	Gross Weight Kg
								L/A	L/B	H		
DIVERTRON	Ø160	186	33	56	536	503	596	550	195	250	28,6	11