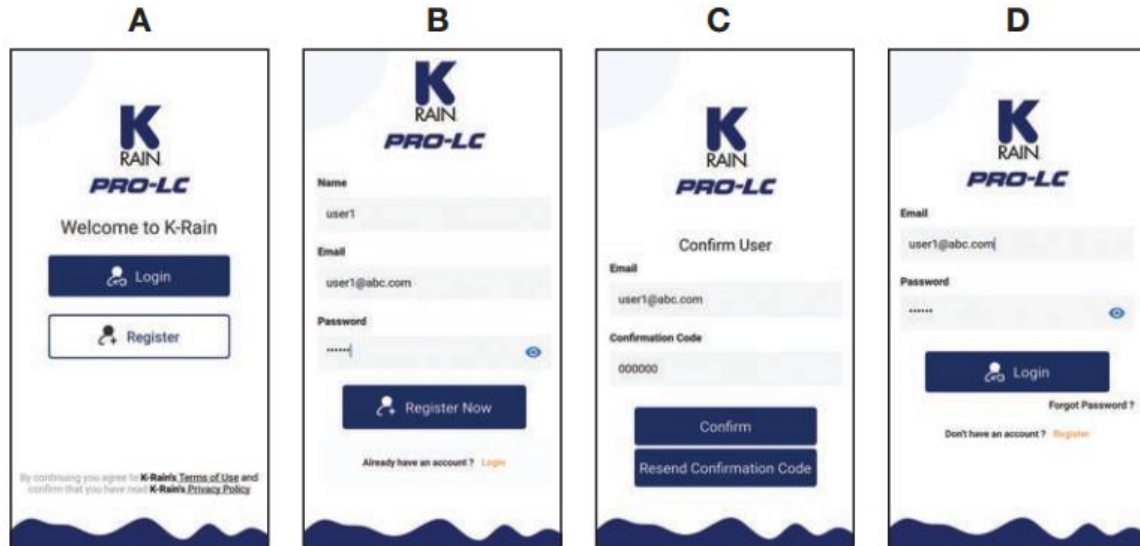


# HydroSure PRO-LC Wi-Fi Bridge Connectivity Guide

## CONNECTIVITY

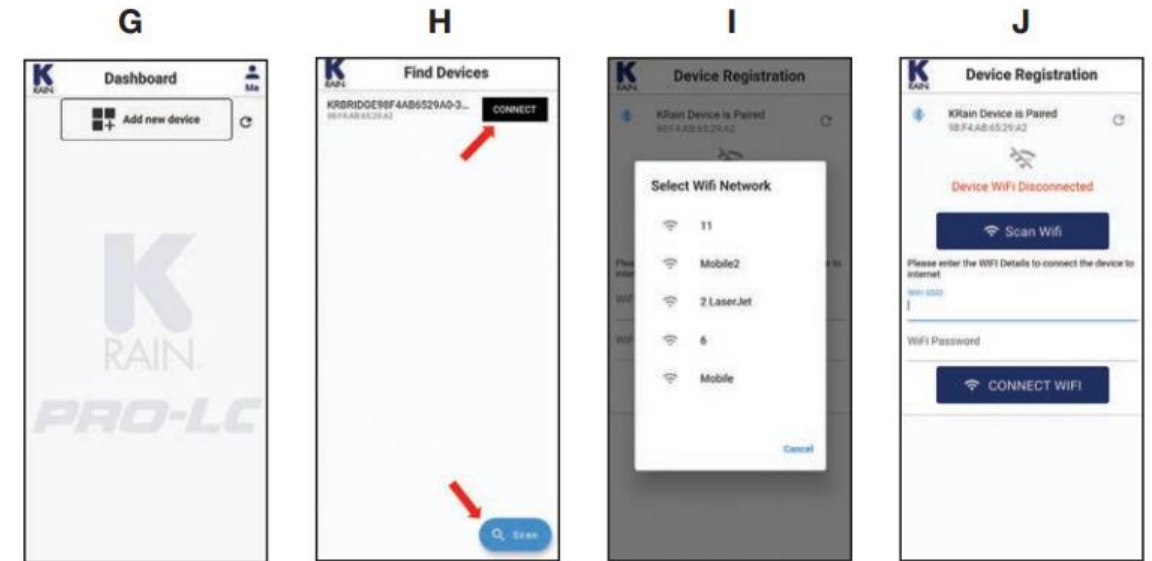
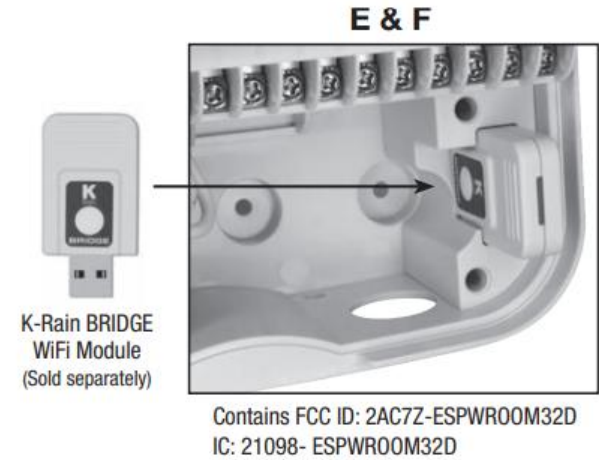
The latest Pro-LC irrigation controller is a WiFi compatible device that can be accessed via an app on a phone or tablet. For access to this, you will need the Pro-LC WiFi-Ready controller and the K-Rain BRIDGE WiFi Module (Sold separately). You will also need access to the internet.

- Using your smartphone/tablet, download the K-Rain PRO-LC app from the App Store or Google PLAY Store.
- On the device you just used to download the app, make sure Bluetooth is set to on.
- Open the PRO-LC app. First time users will need to start the Register process.
  - Click Register in the first page.
  - Type in a username, e-mail address, and choose a password. Click Register Now.
  - Open the e-mail account you used to register and look for the confirmation code sent to you. Fill in the blank under "Confirmation Code" on the app.
  - Login use the e-mail address and password created and go into Dashboard page.



## CONNECTIVITY

- Plug in the K-Rain BRIDGE WiFi Module. Wait for the blue light to stay lit.
- Click the button on the BRIDGE WiFi Module once. The blue LED will start to flash.
- Within the app Dashboard page, click Add new device.
- Click the Scan button and wait for the correct controller to show up. Click connect.
- Select the WiFi network the controller will reside on.
- Type in the correct WiFi password, click CONNECT WIFI.



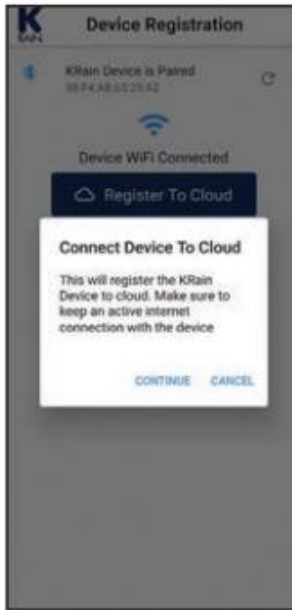
## CONNECTIVITY

- K. Click register to Cloud and confirm this step by clicking CONTINUE.
- L. Wait until the process is complete and the window showing “Cloud Registration Success” message pops up. Click OK.
- M. This will take you back to the Dashboard where all of the connected devices (including the one you just connected) will be listed.

G



H



I



J

