

# HydroSure™

IRRIGATION SYSTEMS THAT WORK

## 100m Two Wheel Hose Cart (Front Loader)

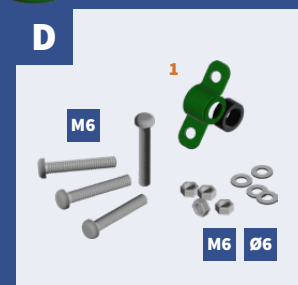
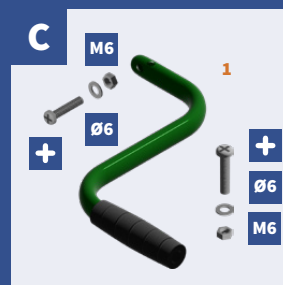
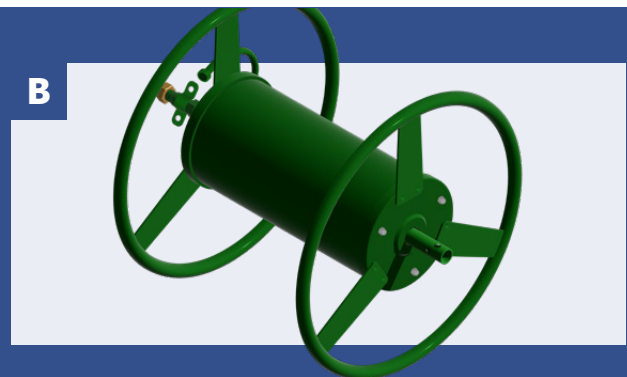
[www.hydrosure.com](http://www.hydrosure.com)

HS2WHC



5 056287 701555 >

### COMPONENTS INCLUDED

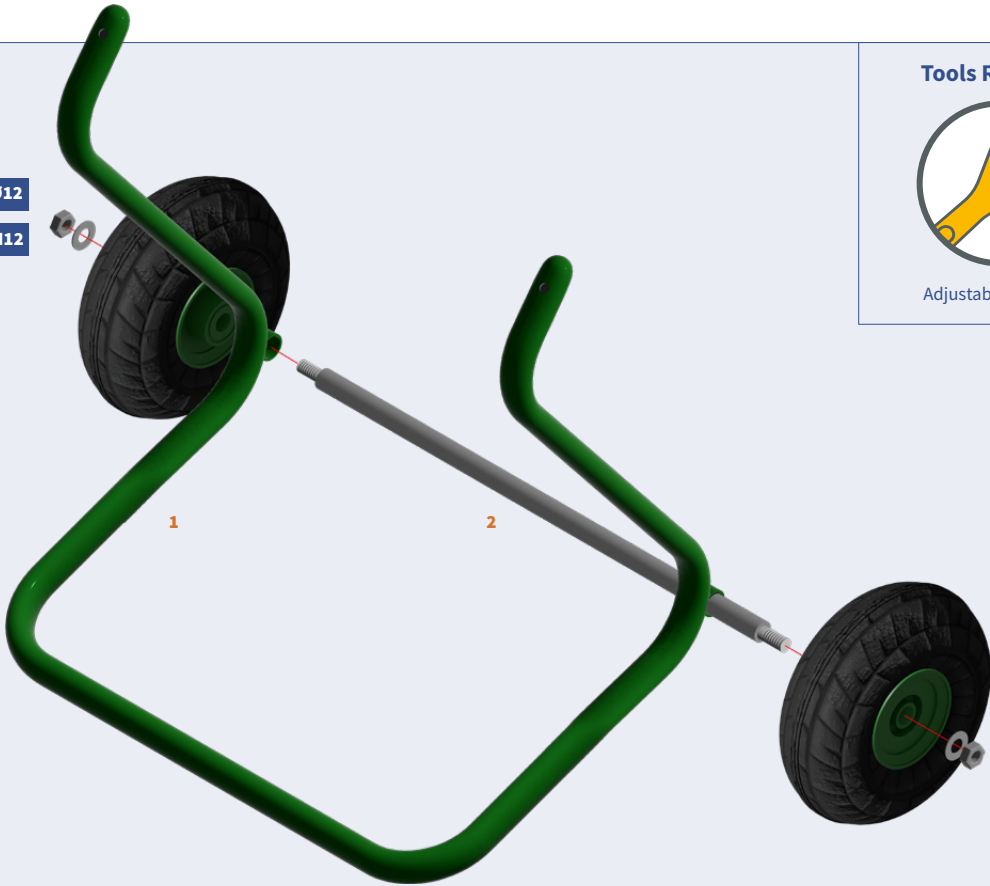


# ASSEMBLY INSTRUCTIONS



Ø12

M12



## Tools Required

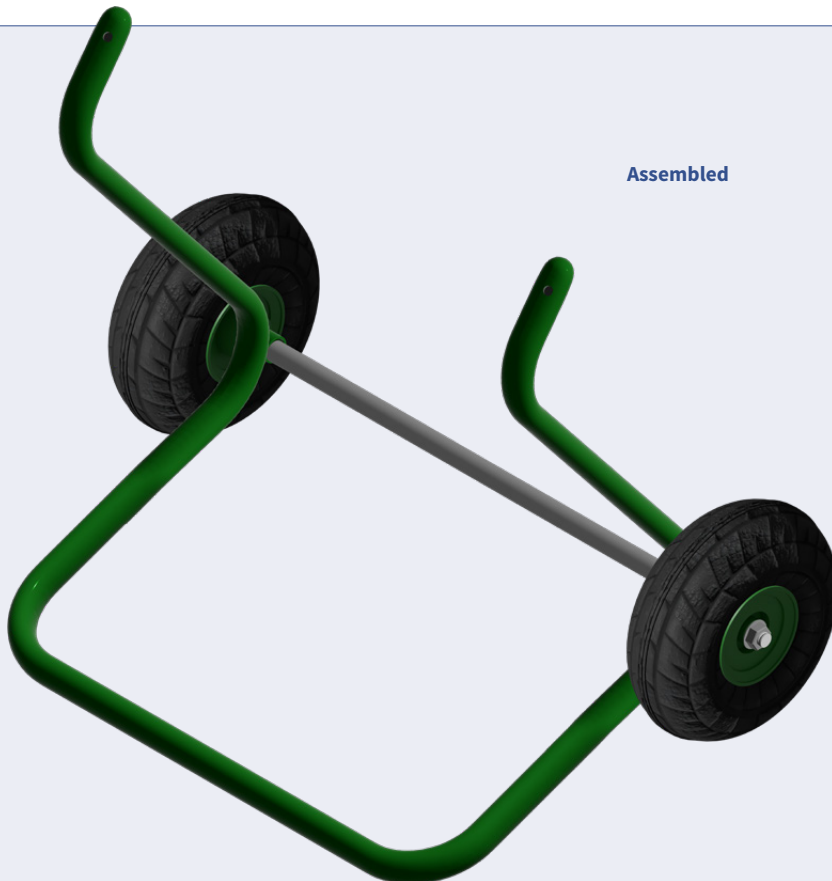


Adjustable Spanner

Ø12

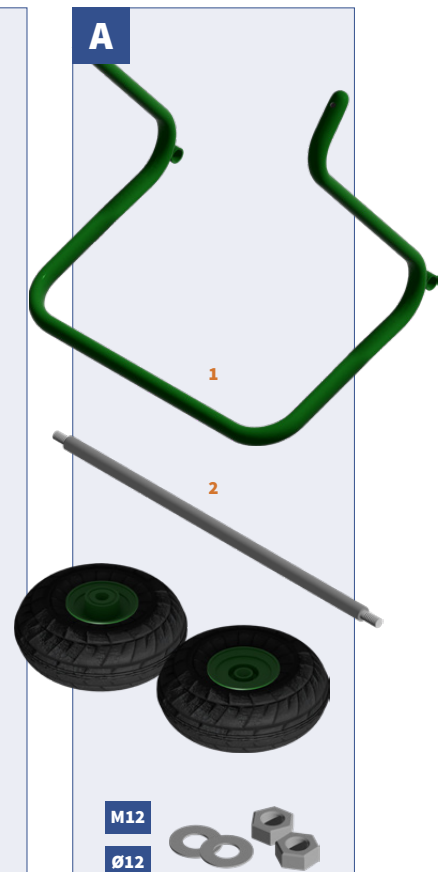
M12

Insert the Axle (2) to the Frame (1) through the Axle Mounts. Slide the Wheels on to each end of the Axle (2) with the Valve Stems Facing Outwards.



Assembled

A

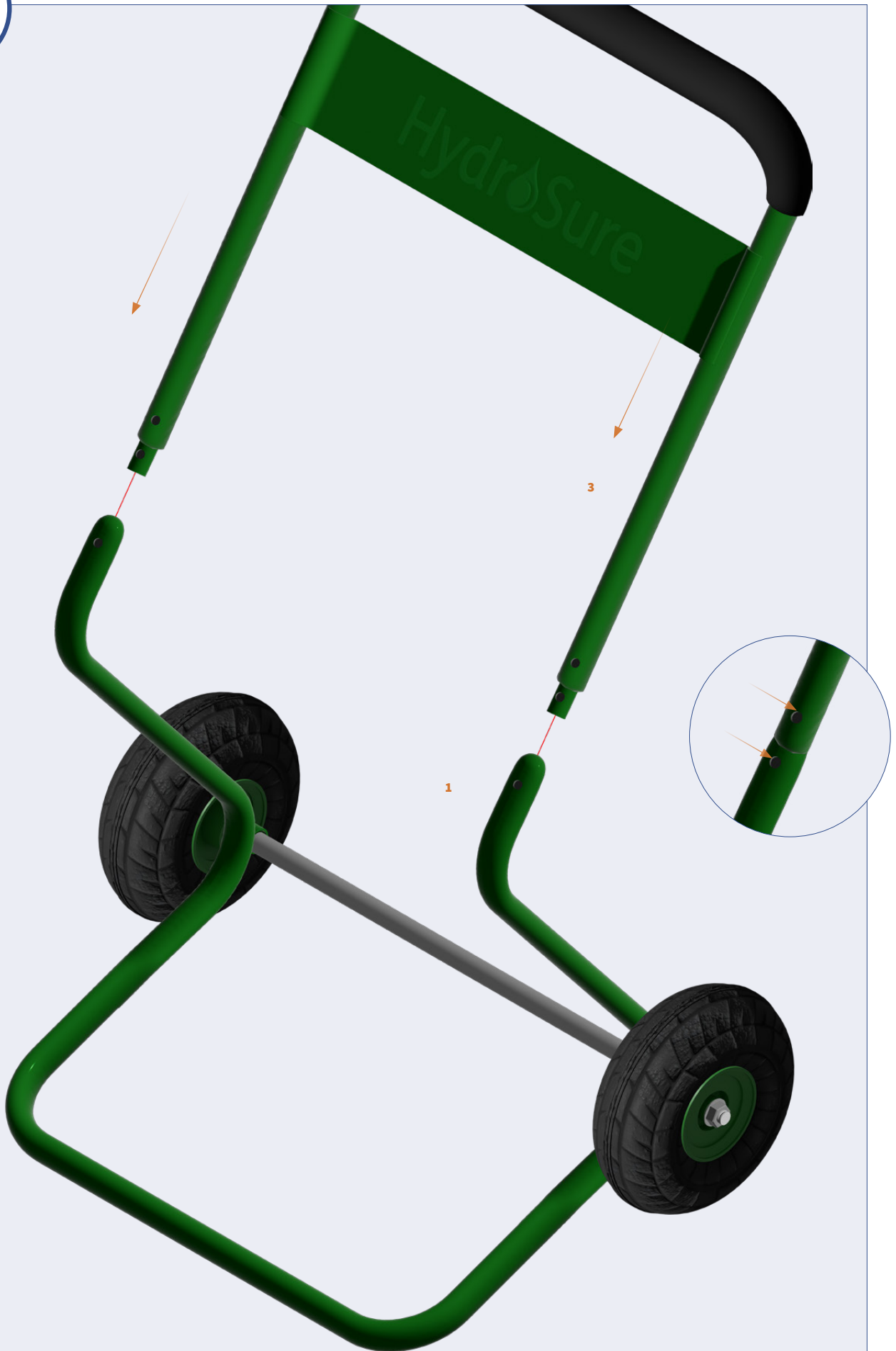


M12

Ø12

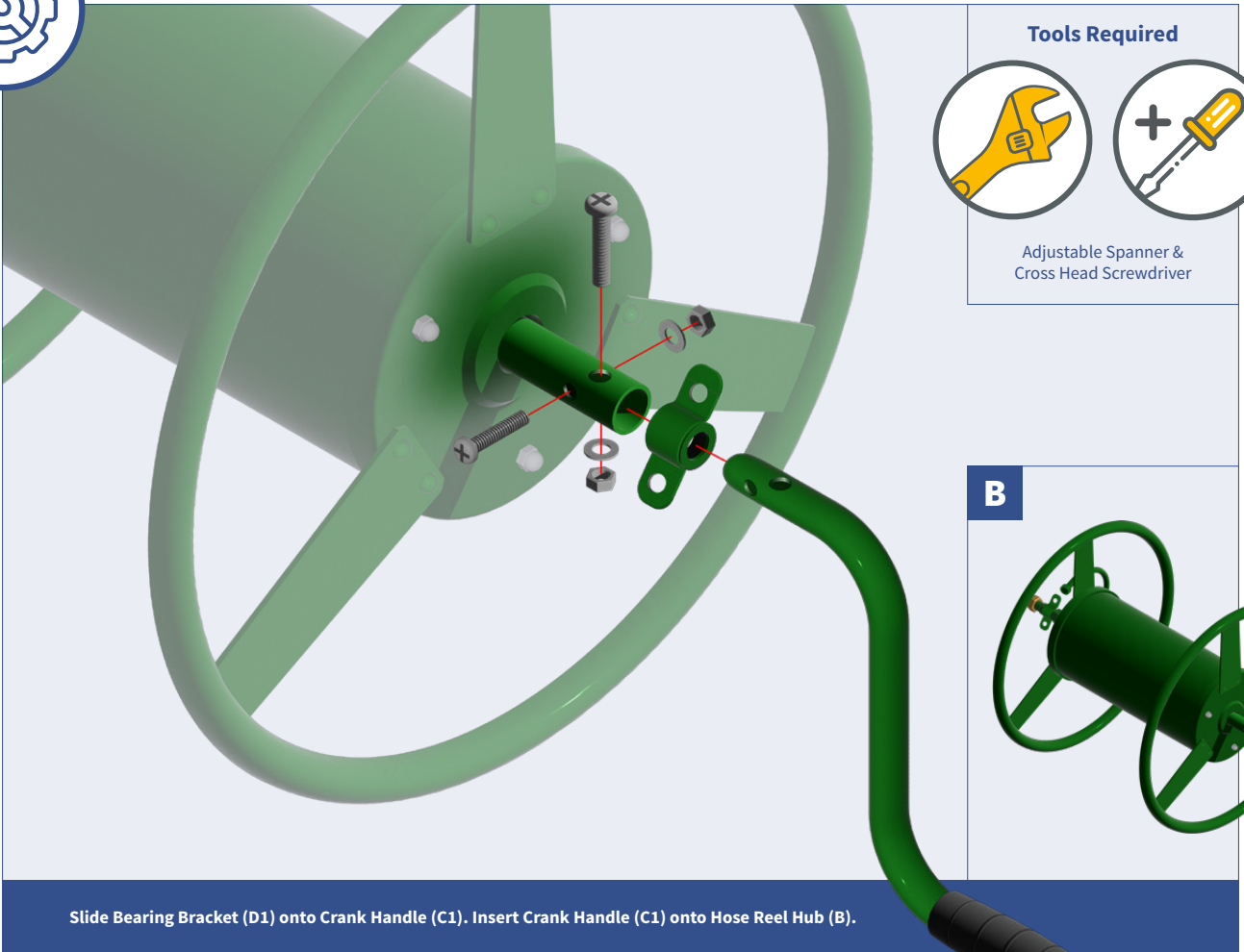
Attach Wheels using Large Ø12 Washers and Large M12 Nuts. Secure using a Spanner.

# ASSEMBLY INSTRUCTIONS



Insert the Pull Handle (3) into the Frame (1) and ensure that the Mounting Holes line up.

# ASSEMBLY INSTRUCTIONS

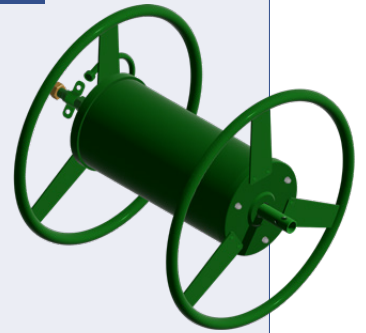


## Tools Required

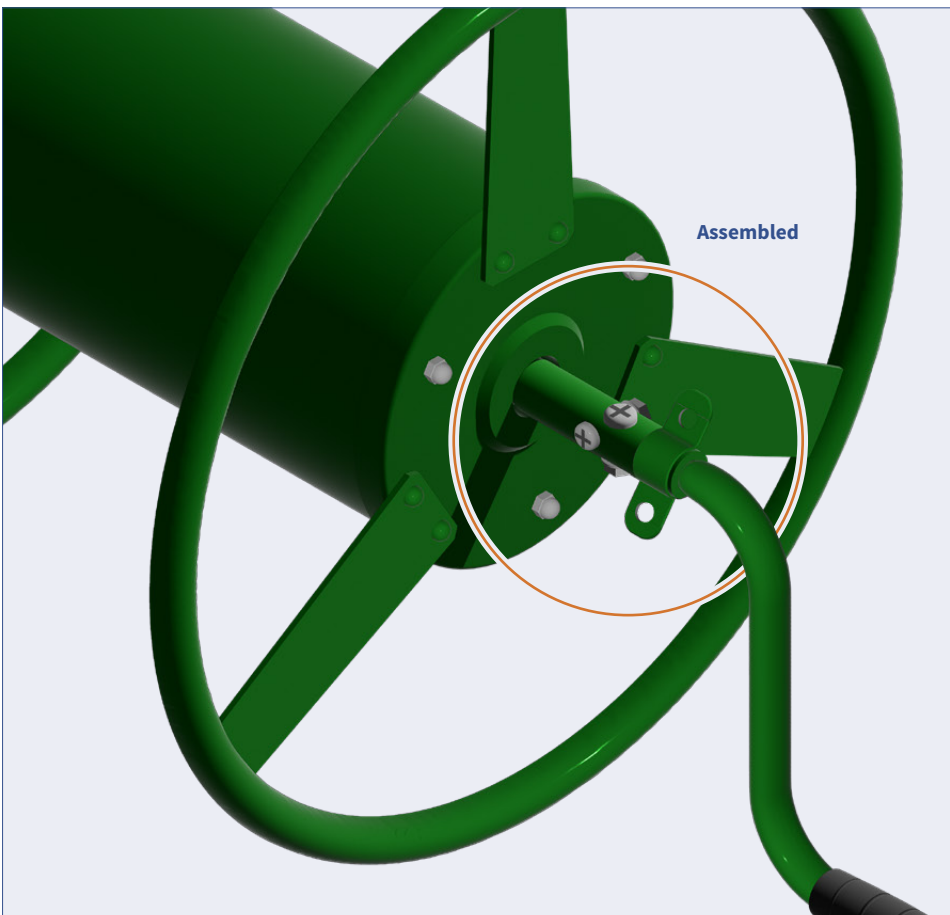


Adjustable Spanner & Cross Head Screwdriver

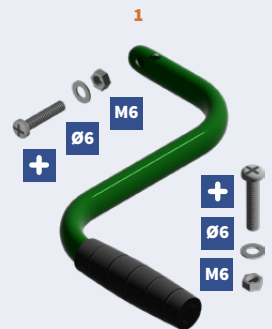
**B**



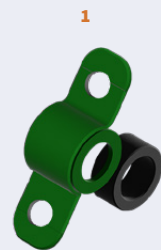
Slide Bearing Bracket (D1) onto Crank Handle (C1). Insert Crank Handle (C1) onto Hose Reel Hub (B).



**C**

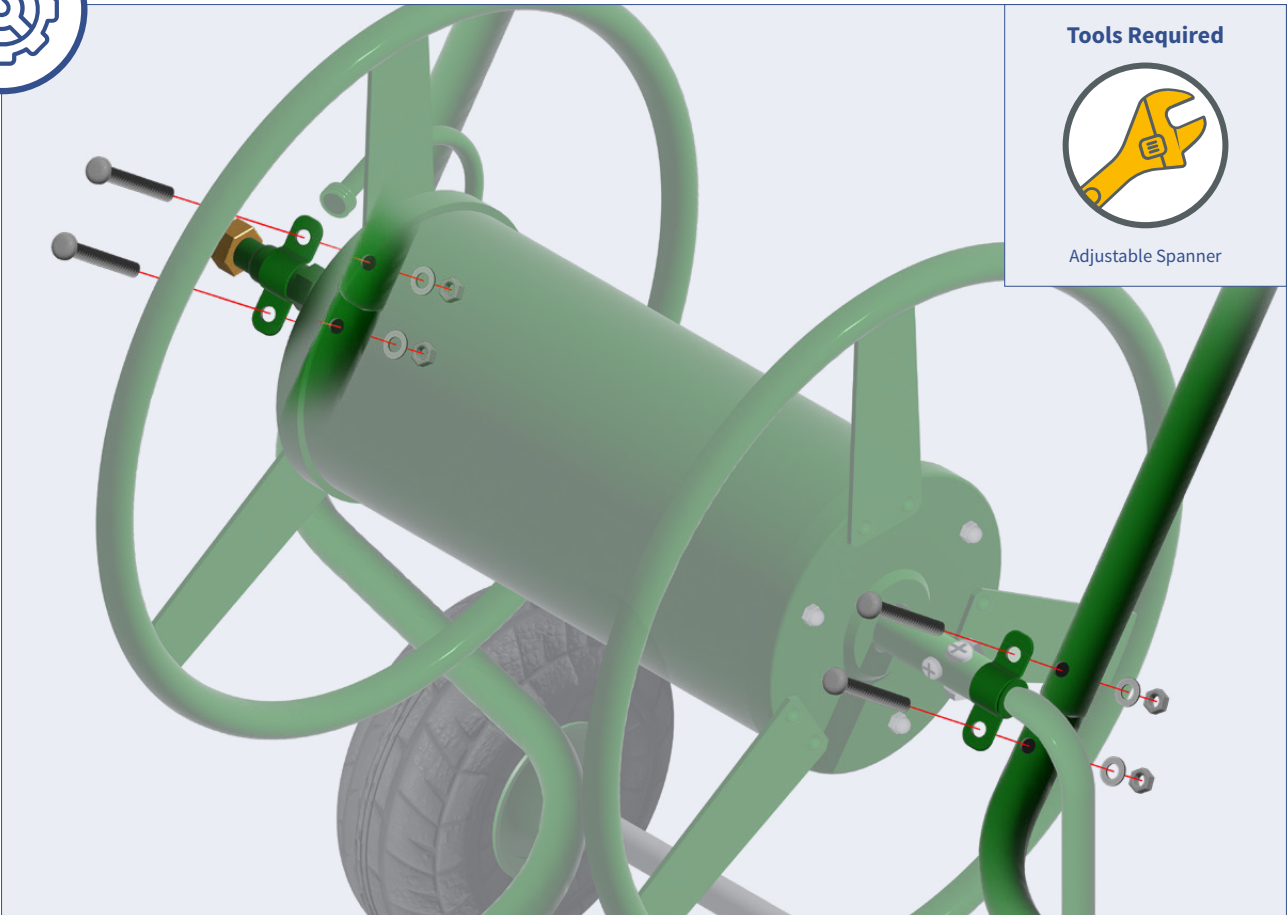


**D**



Secure M6 Screws, Ø6 Washers & M6 Nuts using the Adjustable Spanner and Cross head Screwdriver.

# ASSEMBLY INSTRUCTIONS

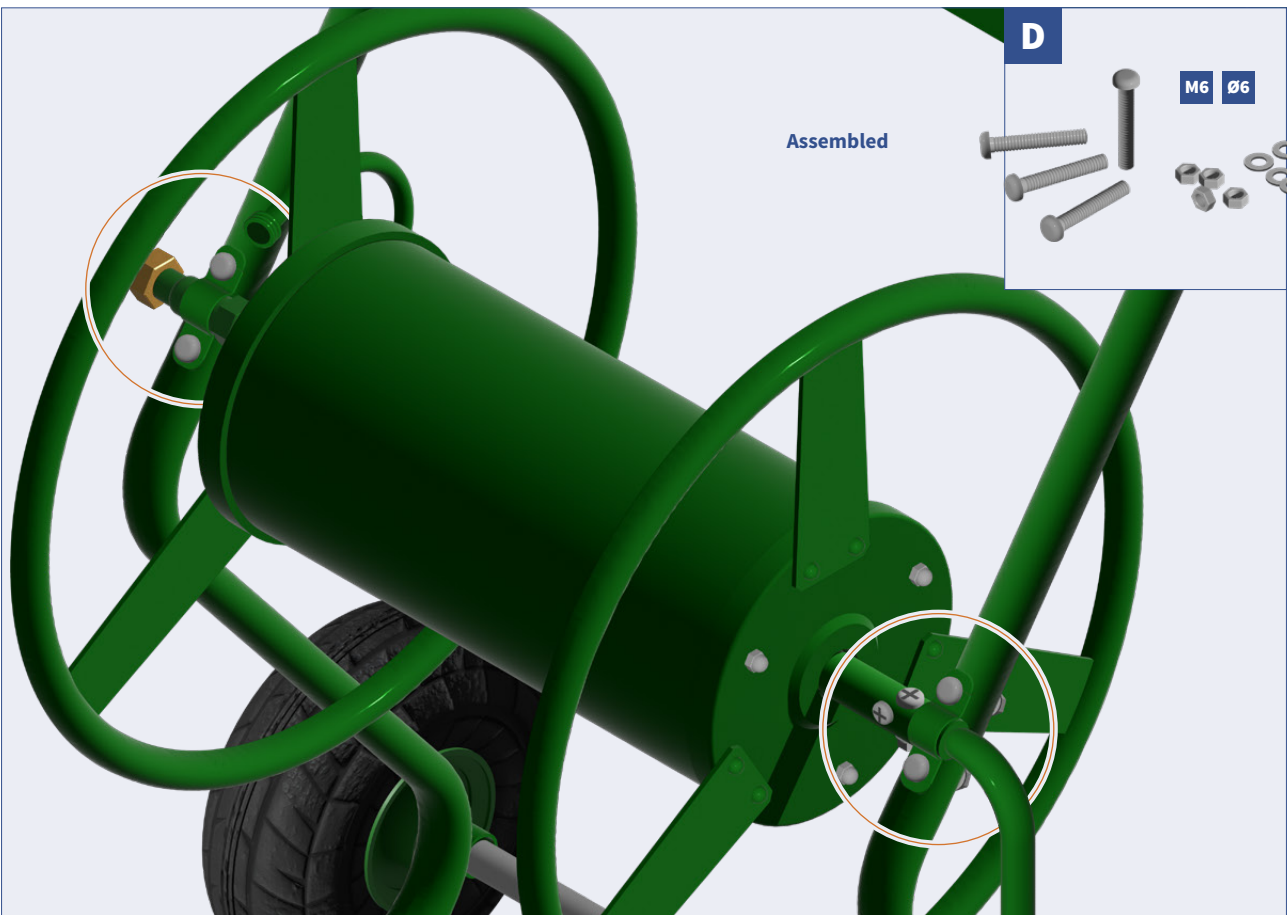


## Tools Required



Adjustable Spanner

Connect Hose Reel (B) to the Frame (A) using M6 Bolts, Ø6 Washers & M6 Nuts.



D

Assembled

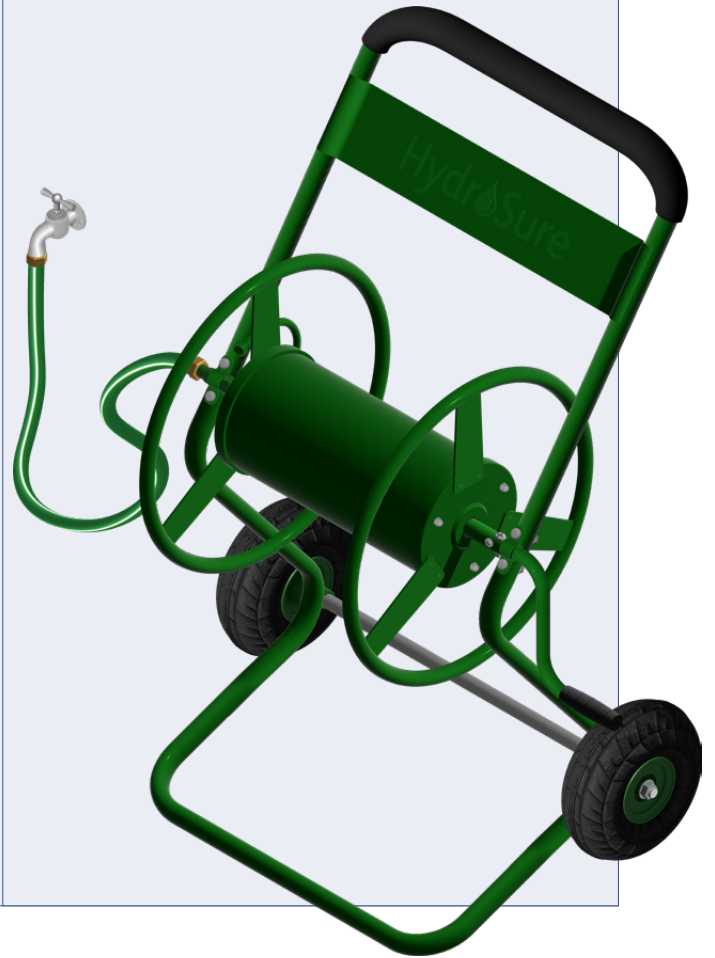
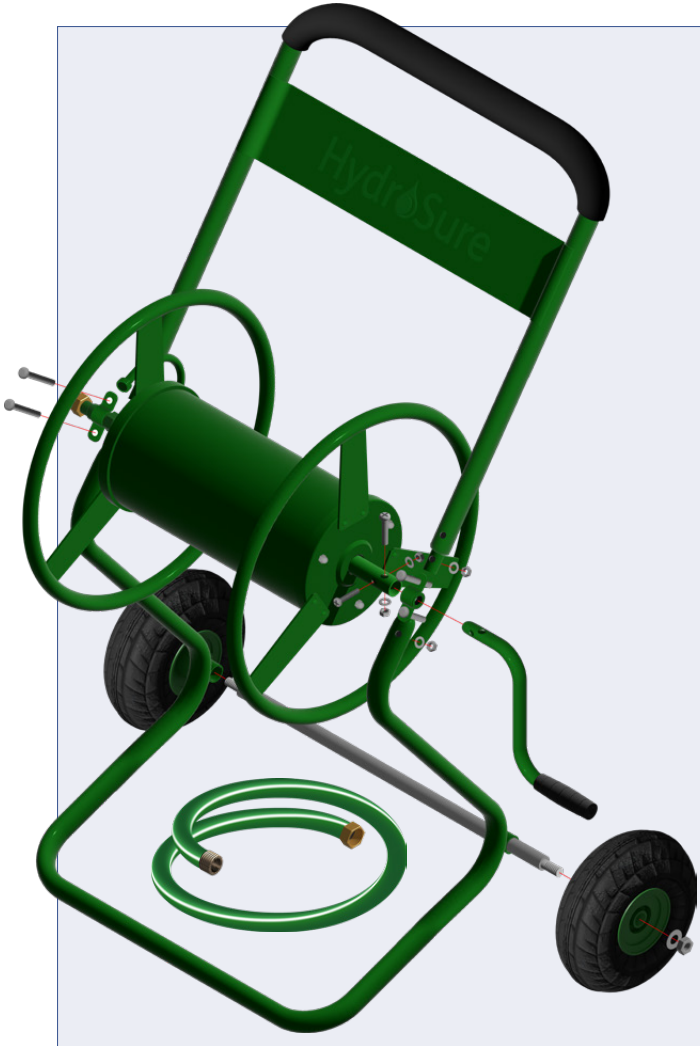


Tighten 4 Fixing Bolts (D) Securely.

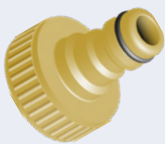
# 150M HEAVY DUTY HOSE REEL CART WITH BASKET

## COMPLETE ASSEMBLY

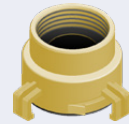
with Leader Hose (E) attached



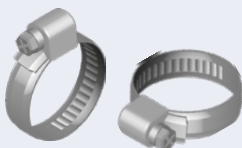
## ADDITIONAL EQUIPMENT



## ADDITIONAL EQUIPMENT



## ADDITIONAL EQUIPMENT



# HydroSure™

IRRIGATION SYSTEMS THAT WORK

[www.hydrosure.com](http://www.hydrosure.com)

