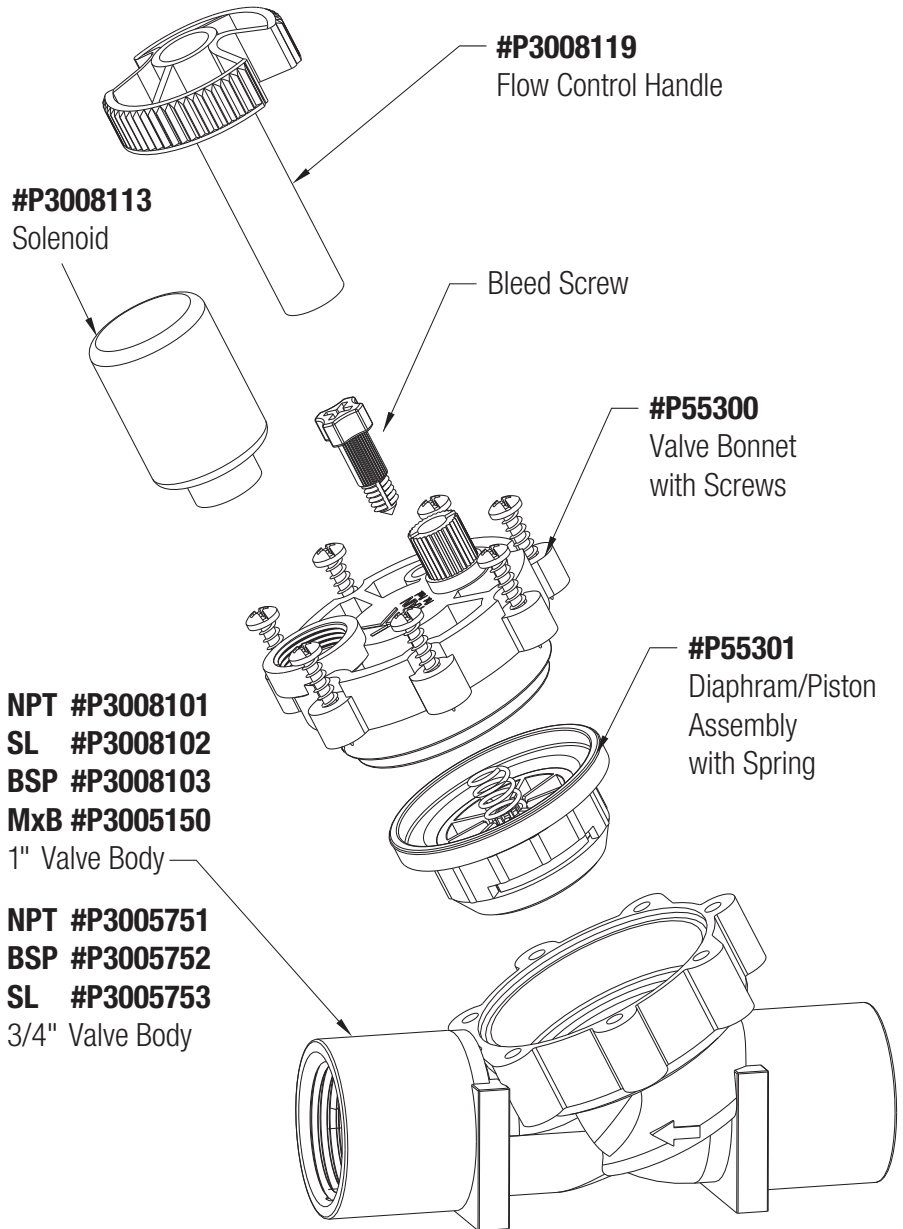


PRO SERIES 100™

1" AND 3/4" ELECTRIC VALVES

PARTS BREAKDOWN



PRO SERIES 100™

1" AND 3/4" ELECTRIC VALVES

FEATURES

- **Straight Flow Path** – Minimal pressure loss
- **Manual Bleed Screw** – For operation with no power
- **Internal Bleed by Turning Solenoid**
- **Flow Control/Handle** – Removable for tight installations
- **Minimal Parts** – For ease of service and durability

OPERATING SPECIFICATIONS

- **Pressure 1"** – 20 PSI minimum to 150 PSI
- **Pressure 3/4"** – 15 PSI minimum to 150 PSI
- **Flow Range** – .25 – 35 GPM
- **Voltage** – 24 VAC, 60 Cycle



BEFORE INSTALLATION

1. Flush system thoroughly before installing valves.
2. Make sure you have sufficient water supply, pressure and flow.

INSTALLING VALVE WITH ADAPTERS

1. Wrap adapters with 2 to 3 complete wraps of teflon tape around threads.
2. Hand tighten adapters into valve.
3. Carefully tighten adapters one additional turn past hand tight.
4. Do not use flow control handle as a lever.

CAUTION: DO NOT OVER-TIGHTEN ADAPTERS!

OPERATING VALVE MANUALLY

1. Open bleed screw counter-clockwise three complete turns.
2. Water will exit screw hole and valve will open.



K-Rain Manufacturing Corp.
1640 Australian Avenue
Riviera Beach, FL 33404 USA
PH: 561.844.1002
1.800.735.7246
FAX: 561.842.9493
www.krain.com