

HydroSure™

IRRIGATION SYSTEMS THAT WORK

Water Tap Timer

www.hydrosure.com

350010101

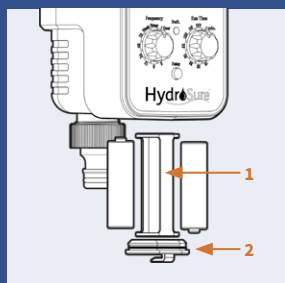


5 056287 714388 >

COMPONENTS INCLUDED



Power:
2 AA alkaline batteries
required (not included)



1. BATTERY COMPARTMENT

2. BATTERY COMPARTMENT COVER

Slide out the battery compartment (1), and insert 2x (LR6/AA) 1.5V alkaline batteries.

- Use only fresh alkaline batteries at the beginning of the season. **DO NOT use rechargeable batteries.**
- Test the unit by turning the Run Time knob to ON position. You should hear the sound of the motor within 10 seconds. If you do not hear the sound, check if the batteries are installed correctly.
- Turn Run Time to OFF position before connecting to tap.

3. 3/4" TAP ADAPTOR

4. COLLAR RING

Loosen the collar ring (4) until the tap adaptor (3) is unlocked, screw the tap adaptor (3) tightly on to a tap and then tighten the collar ring (4).

DO NOT use spanners or pliers to avoid damage to the timer.

5. FREQUENCY KNOB

Determine how often you will water, from 1 hour to 1 week.

6. RUN TIME KNOB

Choose how long to water, from 1 minute to 120 minutes.

7. MALE SNAP-ON CONNECTOR

Connect hose attachment to the male snap-on connector at the bottom of the timer.

8. DELAY BUTTON

To delay the start watering time, press Delay button for more than 3 secs until led is constantly ON, then each press of delay button gives 1 hour delay before the next start watering time. (EXAMPLE 3)

9. LED INDICATOR

Led indicator flashes once every 4 seconds.

Replace with new batteries if LED indicator flashes quickly or on steady.

10. FILTER

Filter traps dirt particles and prolong life of timer.
Clean filter regularly.

PROGRAMMING THE TIMER



FREQUENCY: This determines how often to water.
(from 1 hour to 1 week).

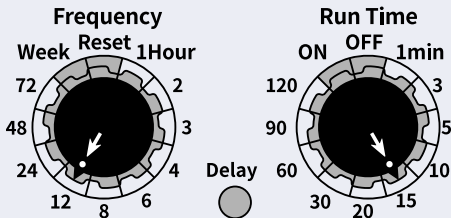
RUN TIME: This determines how long to water.
(from 1 minute to 120 minutes).

NOTE: The first watering will start (X) hours later, (X) is the set Frequency hours.

WARNING: Frequency should always be longer than Run Time.
(Frequency 1 Hour, Run Time 90 min, is NOT a valid setting).

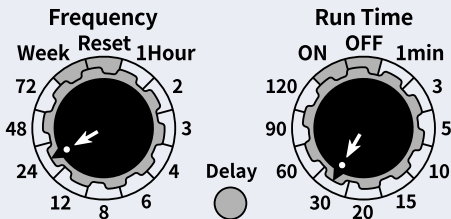
EXAMPLE 1

TO WATER TWICE A DAY FOR 15 MINUTES:
Set Frequency to 12 hours and Run Time to 15min.
The first watering will then start 12 hours after.



EXAMPLE 2

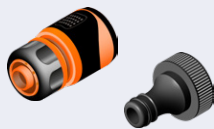
TO WATER ONCE A DAY FOR 30 MINUTES:
Set Frequency to 24 hours and Run Time to 30 min.
The first watering will start then 24 hours after.



MAKING CHANGES AFTER INITIAL SETTINGS:

- Wait for a minimum of 3 seconds for timer to validate new settings after each change. This is indicated by the LED flashing rapidly.
- Changing the Frequency recalculates the next start time.
- Changing the Run Time does not change the next start time.

ADDITIONAL EQUIPMENT



EXAMPLE 3

HOW TO USE DELAY BUTTON:

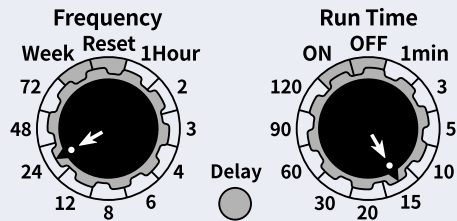
This is based on the current time being 8am.


The Frequency is set to 24 Hours and the Run Time is set to 15 min.


The watering time will run for 15 minutes every 24 hours (Starting at 8am).


If you would like the timer to water at 10am, you will need to press the Delay Button and hold it for 3 seconds until the LED is constantly on.

When the LED light is on - press the Delay Button twice. The timer will then water at 10am every 24 hours.



 Press Delay button for 3 secs

 **Batt.** Led is constantly ON

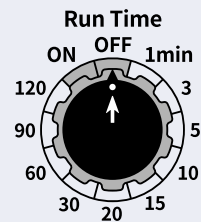
 Press X times, X means how many hours to delay. In this case, X=2

MANUAL WATERING

1. TO START:
Set Run Time to ON.

2. TO STOP:
Set Run Time to Off.

3. WHEN DONE: Set Run Time to another setting.



PROTECTING THE TIMER

1. This timer is designed for outdoor use to control sprinklers or irrigation systems for watering. It can not be used for industrial purposes or be in contact with food, chemicals and pesticides.
2. Operating water pressure is from 0 bar to 8 bars (0 psi to 116 psi).
3. Use with clean and freshwater only - Maximum Temperature 60°C and Minimum Temperature 1°C.
4. Protect timer during winter season or freezing conditions. Remove from tap and drain water inside, remove batteries and keep indoors.
5. Timer is water resistant, NOT water proof. The timer must be installed above ground and vertically to the tap. DO NOT submerge it in water.
6. DO NOT pull the hose while attached to the timer.
7. If timer does not work, please check instruction or visit our Help & Advice Centre at www.waterirrigation.co.uk/how-to-irrigate-a-watering-guide.

