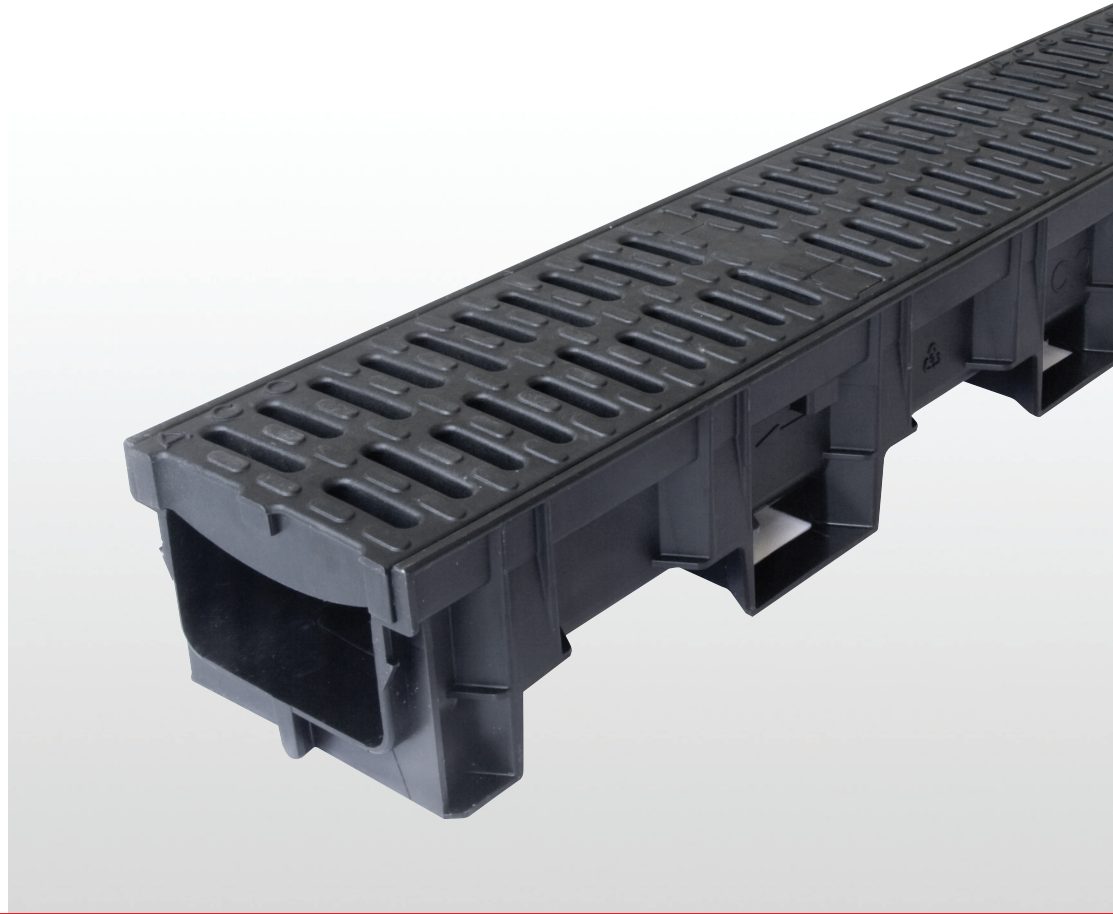


Uniclass L7315	EPIC J3413
Cl/SfB (52.5)	

# ACO Water Management: Urban + Landscape

## ACO HexDrain® B 125

- ✓ Ideal for driveways and small private car parks
- ✓ Easy and quick to install
- ✓ Friction fit, anti-shunt grating eliminates movement
- ✓ Easily cut to 500mm lengths
- ✓ Full range of accessories for a professional installation
- ✓ Heelguard™ grating suitable for pedestrian traffic
- ✓ ACO Drainlock™ grating – this bar-less looking device allows for quick and simple installation of gratings
- ✓ CE marked and fully certified to Load Class B 125 BS EN 1433:2002



### *ACO HexDrain® B 125*

## **ACO HexDrain B 125 high quality, high strength light duty channel drainage system with Heelguard™ grating.**

ACO HexDrain® B 125 provides a drainage system for driveways and small private car parks.

Manufactured using recycled polypropylene, the high strength 1m channel comes complete with Heelguard™ black composite gratings, fitted with ACO's Drainlock™ barless locking system.

ACO HexDrain® B 125 has a full set of accessories to provide a variety of quick and professional installations.

### **Typical applications**

- ▶ Driveways
- ▶ Small private car parks



# ACO HexDrain® B 125

## System Overview



Driveways and small private car parks

### Features

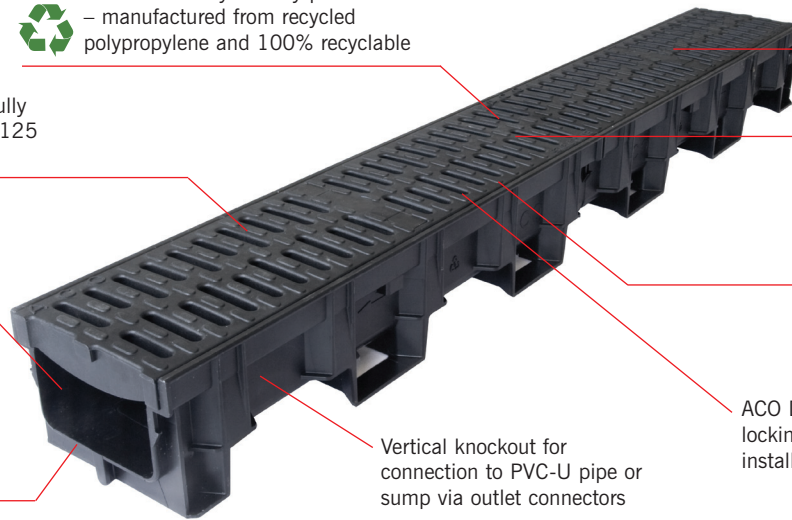


Environmentally friendly product – manufactured from recycled polypropylene and 100% recyclable

System CE marked and fully certified to Load Class B 125 BS EN 1433:2002

100mm overall channel depth

Male and female channel connections clip together for quick and easy installation



Vertical knockout for connection to PVC-U pipe or sump via outlet connectors

ACO Drainlock™ grating – this bar-less locking device allows quick and simple installation of gratings

Cutting guide to create half metre channels

Anti-shunt prevents grating movement when installed

Heelguard™ grating with 8mm slots

### ACO HEXDRAIN B 125 ACCESSORIES



Closing end cap

Ø110mm Vertical outlet connector

Ø110mm Roddable foul air-trap

Sump unit with silt bucket

### ACO HexDrain® B 125 channel assembly

Product code	Description	Length (mm)	Width (mm)	Depth (mm)	Invert (mm)	Weight (kg)
11019	Channel with 2 composite Heelguard™ gratings	1000	138	100	75	2.9

### ACO HexDrain® B 125 accessories

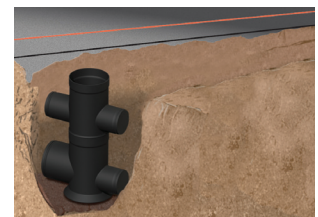
Product code	Description	Length (mm)	Width (mm)	Depth (mm)	Invert (mm)	Weight (kg)
11085	Closing end cap	11	138	105	-	0.10
11285	Ø110mm Vertical outlet connector	-	Ø110	60	-	0.10
11191	Ø110mm Roddable foul air-trap	240	Ø110	400	-	1.20
11385	Black plastic sump assembly c/w silt bucket*	-	Ø160	510	-	3.00

\* Sump assembly consists of a Ø160mm vertical outlet connector, silt bucket and sump body.

### ACO HEXDRAIN B 125 INSTALLATION



Dig trench, allowing for width of channel plus 100mm each side for concrete haunch. Trench depth should allow for channel depth plus 100mm for concrete bedding. Also allow for 100mm concrete around and beneath sump unit. Mark finishing height with fixed line 3mm below final surface. Lay 100mm (min) bed of concrete.



Knock out pre-formed outlet from the inside (marked with hammer symbol) and trim edges with a sharp knife. Fit outlet connector and sump. Position sump and outlet channel on concrete bed, fit PVC-U union/trap to drainage pipework.



Lay channels starting from outlet/sump, ensuring joints connect by lowering units horizontally. Fit endcaps to end channels. For fully watertight joints, use a suitable sealant (contact ACO for further advice).



With gratings fitted, haunch around channels/sumps with concrete. Final surface to be 3mm above grating. Bricks/paviours should be laid in mortar for lateral stability.

### ACO Technologies plc

ACO Business Park, Hitchin Road, Shefford, Bedfordshire SG17 5TE  
 Tel: 01462 816666 Fax: 01462 815895  
 e-mail: technologies@aco.co.uk website: www.aco.co.uk

