

Uniclass L7315	EPIC J3413
Cl/SfB (52.5)	

ACO Water Management: Urban + Landscape

ACO RainDrain®

- ✓ Easy and quick to install
- ✓ Clip locking grating for secure installation
- ✓ Choice of 6 'Complete the Look' gratings
- ✓ Channel design improves flow velocity, promotes self cleansing
- ✓ Manufactured from Vienite® - ACO's high strength sustainable polymer concrete
- ✓ Full range of accessories for a professional installation
- ✓ CE marked and fully certified to Load Class A 15 BS EN 1433:2002
- ✓ Ideal for domestic and light vehicle traffic applications



ACO RainDrain®

Polymer concrete domestic drainage channel

Manufactured from Vienite®, ACO's high strength recycled polymer concrete material, the ACO RainDrain® is designed to provide surface water drainage for a range of domestic applications. Its lightweight 1m channel design makes it quick and easy to install.

The new range of elegant and modern 'Complete the Look' gratings provide choice and style to complement driveway and patio projects. A choice of 6 gratings are available:

- Wedge Wire Stainless Steel
- Antique Iron
- Polished Stainless Steel
- Anthracite
- Galvanised Steel
- Black Plastic

ACO RainDrain® has a full set of accessories available to provide a wide variety of quick and professional installations.

Typical applications

- ▶ Driveways
- ▶ Patios
- ▶ Paths



ACO RainDrain®

System Overview



Pedestrian, cycleways, minimally trafficked areas (light domestic vehicles only)*.

Features

Improved performance, system CE marked and fully certified to Load Class A 15 BS EN 1433:2002

Choice of 'Complete the Look' gratings suitable for domestic applications

Sealant groove for simple watertight installation

Knock-out for connection to Ø110mm PVC-U pipe

Channels interlock for easy and simple on-site fabrication

Clip locking grating for secure and simple installation

Lightweight design for easy handling and installation

Channel shape anchors product into concrete surround

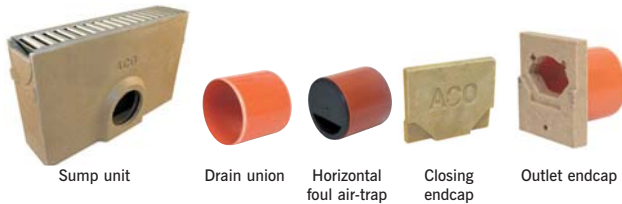
Manufactured from recycled materials and is recyclable



Profile improves speed of water and promotes self cleansing

*A 15 products are tested to a loading of 1.5 tonnes. No A 15 products are suitable for trafficking by heavy domestic vehicles such as 4x4s or SUVs.

ACO RAINDRAIN ACCESSORIES



Sump unit

Drain union

Horizontal foul air-trap

Closing endcap

Outlet endcap

ACO RainDrain® channel assembly

Product code	Description	Length (mm)	Width (mm)	Depth (mm)	Weight (kg)
47000	Channel with galvanised steel grating 1m A 15	1000	118	97	7.6

ACO RainDrain® options and accessories

Product code	Description	Length (mm)	Width (mm)	Depth (mm)	Weight (kg)
38703	Sump with galvanised steel grating c/w sediment bucket	500	118	303	11.3
38504	Closing endcap	-	118	97	0.4
38505	Outlet endcap Ø110mm	-	118	150	0.6
01684	Horizontal foul air-trap	100	Ø110	-	0.2
0056	Drain union PVC-U Ø110mm	100	Ø110	-	0.1
1367	Grating lifting tool	-	-	-	0.2

Gratings

Product code	Description	Length (mm)	Width (mm)	Depth (mm)	Weight (kg)
10323	Wedge Wire Stainless Steel	1000	118	15	3
38512	Antique Iron	500	118	15	2.3
310307	Polished Stainless Steel	1000	118	15	1.2
10305	Anthracite	1000	118	15	1.3
38516	Galvanised Steel	1000	118	15	1.3
319250	Black Plastic	1000	118	15	0.7



Wedge Wire Stainless Steel

Antique Iron

Polished Stainless Steel

Anthracite

Galvanised Steel

Black Plastic

ACO RAINDRAIN INSTALLATION



Dig trench 318mm wide (218mm wide if against a structure) by 200mm deep for channel (400mm deep for sump). Mark finishing height with fixed line 3mm below final surface. Lay 100mm (min.) bed of concrete.



Knock out pre-formed outlet from the inside (marked with hammer symbol) or fit sump or outlet endcap. Position sump or outlet channel on concrete bed, fit PVC-U union/trap to drainage pipework.



Lay channels starting from outlet/sump, ensuring joints connect by lowering units horizontally. Fit endcap to end channel. For fully watertight joints, use a suitable sealant (contact ACO for further advice).

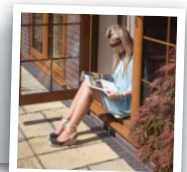


With gratings fitted, haunch around channels/sumps with concrete (suitable fill material). Final surface to be 3mm above grating. Bricks/paviours should be laid in mortar for lateral stability.

COMPLETE THE LOOK



Try our selector to see how your patio or driveway might look with our new grating range.
www.aco.co.uk/completethelook



ACO Technologies plc

ACO Business Park, Hitchin Road, Shefford, Bedfordshire SG17 5TE

Tel: 01462 816666 Fax: 01462 815895

e-mail: technologies@aco.co.uk website: www.aco.co.uk